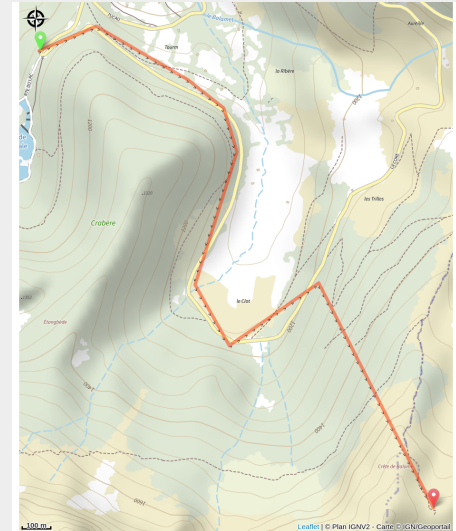


De Bethmale au col de la Core

France - Bethmale



Arrien-en-Bethmale, vue du village (Samrong01 - CC BY-SA 4.0)



Au revoir
Test ambiance

Useful information

Practice : Pédestre

Duration : 2 h

Length : 3.1 km

Trek ascent : 722 m

Difficulty : Easy

Type : Traversée

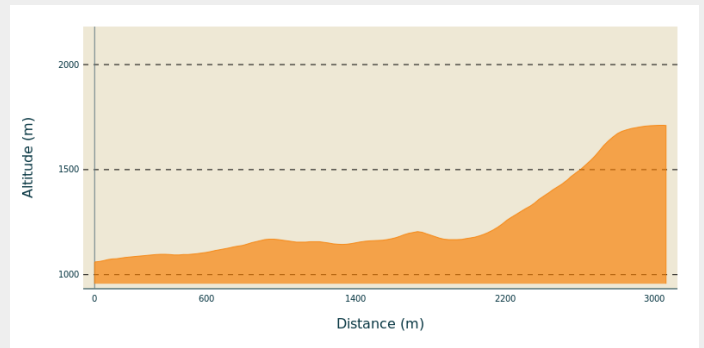
Trek

Departure : Bethmale

Arrival : col de la Core

Cities : 1. Bethmale
2. Sentenac-d'Oust

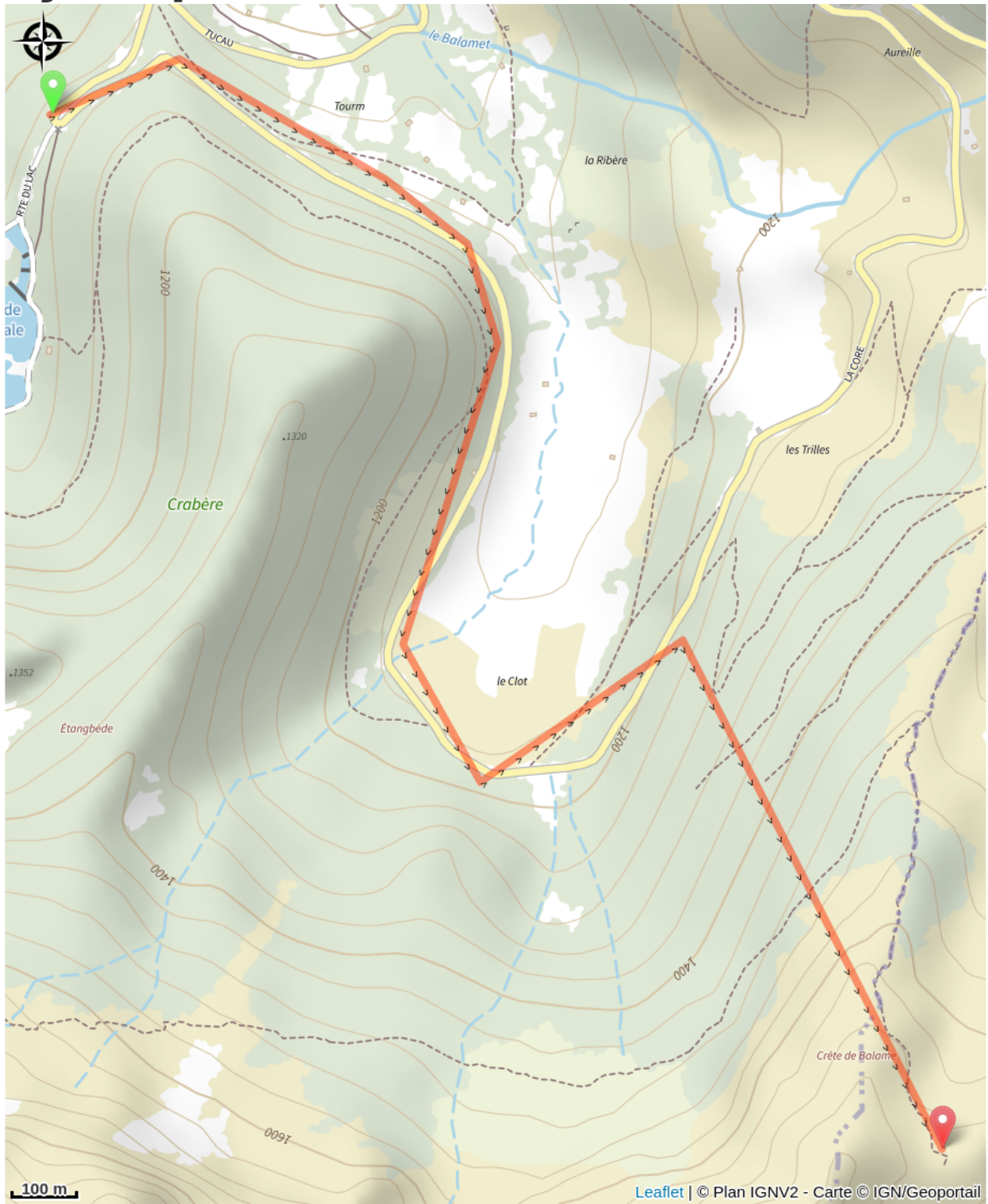
Altimetric profile



Min elevation 1057 m Max elevation 1711 m

La belle description de la crête.

On your path...



All useful information

How to come ?

Access

Bonjour